



# FITTINGS FOR COMMERCIAL VEHICLES



## DIVIDERS SERIES



**DIVIDERS**  
**E4 365 050**  
page 4



**DIVIDERS**  
**E5 365 050**  
page 16



**DIVIDERS**  
**E4 365 071**  
page 6



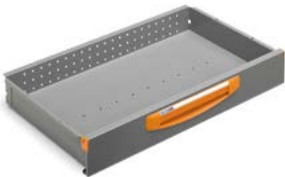
**DIVIDERS**  
**E5 365 071**  
page 18



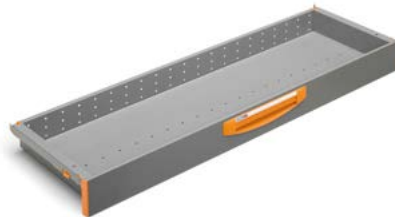
**DIVIDERS**  
**E4 445 050**  
page 8



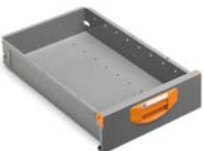
**DIVIDERS**  
**E5 365 101**  
page 20



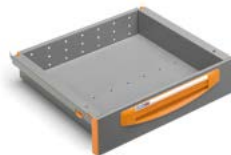
**DIVIDERS**  
**E4 445 071**  
page 10



**DIVIDERS**  
**E5 365 122**  
page 22



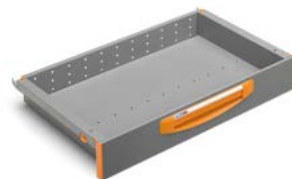
**DIVIDERS**  
**E4 508 036**  
page 12



**DIVIDERS**  
**E5 445 050**  
page 24



**DIVIDERS**  
**E4 508 044**  
page 14



**DIVIDERS**  
**E5 445 071**  
page 26



**DIVIDERS**  
**E5 445 101**  
page 28



**DIVIDERS**  
**E5 445 122**  
page 30



## DIVIDERS

**E8 091 042**

page 32



## DIVIDERS

**E8 091 058**

page 34



## DIVIDERS

**E8 093 042**

page 36



## DIVIDERS

**E8 093 058**

page 38



## DIVIDERS

**E8 108 042**

page 40



## DIVIDERS

**E8 108 058**

page 41





# DIVIDERS

## E4 365 050

Dividers for drawers series S4 suitable for modules with width 508 mm and depth 365 mm  
 Drawer load capacity: 40 Kg  
 Available heights: 100 - 150 mm



**EXAMPLE E4 365050 A0** for heights: 100 - 150 mm

Partition example for steel drawer F 22 S4 365050:  
 1 rubber "mat" S4/S5



**EXAMPLE E4 365050 B1** for heights: 100 mm

**EXAMPLE E4 365050 B3** for heights: 150 mm

Partition example for steel drawer F 22 S4 365050 with 2 compartments:  
 1 "divider" S4/S5  
 1 rubber "mat" S4/S5



**EXAMPLE E4 365050 C0** for heights: 100 mm

Partition example for steel drawer F 22 S4 365050 with 24 compartments:  
 24 "yellow" inset boxes



**EXAMPLE E4 365050 D0** for heights: 100 mm

Partition example for steel drawer F 22 S4 365050 with 12 compartments:  
 12 "blue" inset boxes



**EXAMPLE E4 365050 E0** for heights: 100 mm

Partition example for steel drawer F 22 S4 365050 with 18 compartments:  
 12 "yellow" inset boxes  
 6 "blue" inset boxes



**EXAMPLE E4 365050 F0** for heights: 100 mm

Partition example for steel drawer F 22 S4 365050 with 8 compartments:  
 8 "green" inset boxes



**EXAMPLE E4 365050 GO** for heights: 100 mm

Partition example for steel drawer F 22 S4 365050 with 10 compartments:  
6 "blue" inset boxes  
4 "green" inset boxes



**EXAMPLE E4 365050 HO** for heights: 100 mm

Partition example for steel drawer F 22 S4 365050 with 7 compartments:  
3 "blue" inset boxes  
2 "green" inset boxes  
2 "forest" inset boxes



**EXAMPLE E4 365050 LO** for heights: 100 mm

Partition example for steel drawer F 22 S4 365050 with 12 compartments:  
4 "yellow" inset boxes  
4 "blue" inset boxes  
4 "green" inset boxes



**EXAMPLE E4 365050 MO** for heights: 100 mm

Partition example for steel drawer F 22 S4 365050 with 16 compartments:  
4 "red" inset boxes  
5 "yellow" inset boxes  
4 "blue" inset boxes  
3 "green" inset boxes



**EXAMPLE E4 365050 NO** for heights: 100 mm

Partition example for steel drawer F 22 S4 365050 with 11 compartments:  
4 "red" inset boxes  
3 "yellow" inset boxes  
2 "blue" inset boxes  
1 "green" inset box  
1 "divider" S4/S5  
1 rubber "mat" S4/S5



**EXAMPLE E4 365050 PO** for heights: 100 mm

Partition example for steel drawer F 22 S4 365050 with 7 compartments:  
2 "yellow" inset boxes  
2 "blue" inset boxes  
2 "green" inset boxes  
1 "divider" S4/S5  
1 rubber "mat" S4/S5



# DIVIDERS E4 365 071

Dividers for drawers series S4 suitable for modules with width 717 mm and depth 365 mm  
Drawer load capacity: 40 Kg  
Available heights: 100 - 150 mm



**EXAMPLE E4 365071 A0** for heights: 100 - 150 mm

Partition example for steel drawer F 22 S4 365071:  
1 rubber "mat" S4/S5



**EXAMPLE E4 365071 B1** for heights: 100 mm

**EXAMPLE E4 365071 B3** for heights: 150 mm

Partition example for steel drawer F 22 S4 365071 with 2 compartments:  
1 "divider" S4/S5  
1 rubber "mat" S4/S5



**EXAMPLE E4 365071 C1** for heights: 100 mm

**EXAMPLE E4 365071 C3** for heights: 150 mm

Partition example for steel drawer F 22 S4 365071 with 3 compartments:  
2 "dividers" S4/S5  
1 rubber "mat" S4/S5



**EXAMPLE E4 365071 D0** for heights: 100 mm

Partition example for steel drawer F 22 S4 365071 with 18 compartments:  
18 "blue" inset boxes



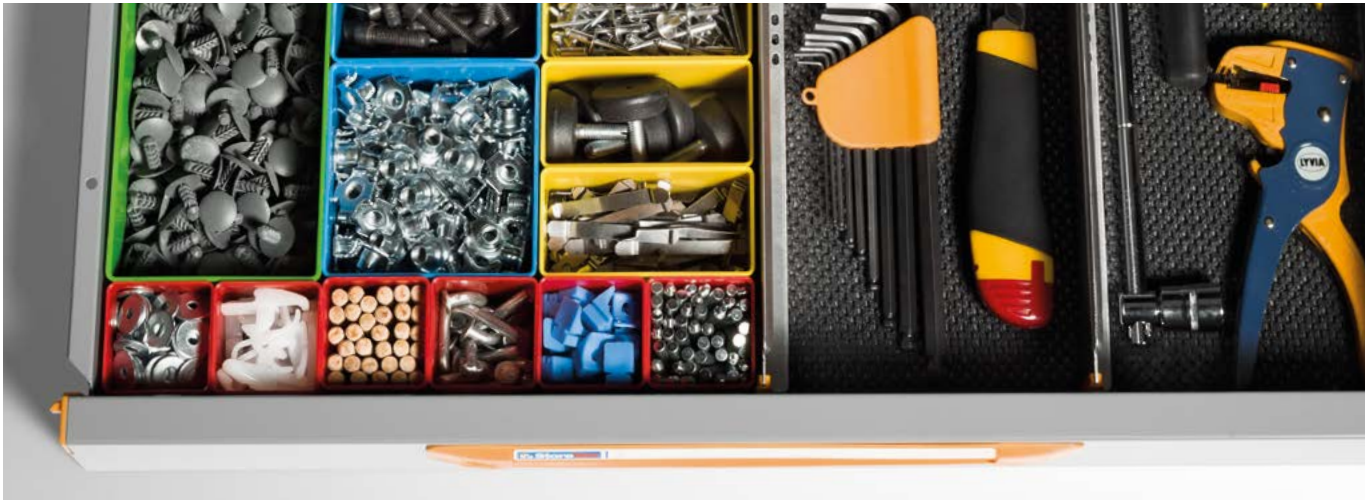
**EXAMPLE E4 365071 E0** for heights: 100 mm

Partition example for steel drawer F 22 S4 365071 with 27 compartments:  
18 "yellow" inset boxes  
9 "blue" inset boxes



**EXAMPLE E4 365071 F0** for heights: 100 mm

Partition example for steel drawer F 22 S4 365071 with 12 compartments:  
12 "green" inset boxes



**EXAMPLE E4 365071 GO** for heights: 100 mm

Partition example for steel drawer F 22 S4 365071 with 15 compartments:  
9 "blue" inset boxes  
6 "green" inset boxes



**EXAMPLE E4 365071 HO** for heights: 100 mm

Partition example for steel drawer F 22 S4 365071 with 12 compartments:  
6 "blue" inset boxes  
4 "green" inset boxes  
2 "forest" inset boxes



**EXAMPLE E4 365071 LO** for heights: 100 mm

Partition example for steel drawer F 22 S4 365071 with 19 compartments:  
6 "yellow" inset boxes  
9 "blue" inset boxes  
4 "green" inset boxes



**EXAMPLE E4 365071 MO** for heights: 100 mm

Partition example for steel drawer F 22 S4 365071 with 26 compartments:  
8 "red" inset boxes  
8 "yellow" inset boxes  
6 "blue" inset boxes  
4 "green" inset boxes



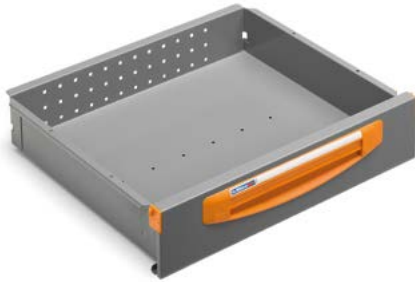
**EXAMPLE E4 365071 NO** for heights: 100 mm

Partition example for steel drawer F 22 S4 365071 with 15 compartments:  
4 "red" inset boxes  
4 "yellow" inset boxes  
3 "blue" inset boxes  
2 "green" inset boxes  
2 "dividers" S4/S5  
1 rubber "mat" S4/S5



**EXAMPLE E4 365071 PO** for heights: 100 mm

Partition example for steel drawer F 22 S4 365071 with 12 compartments:  
6 "yellow" inset boxes  
3 "blue" inset boxes  
2 "green" inset boxes  
1 "divider" S4/S5  
1 rubber "mat" S4/S5



# DIVIDERS

## E4 445 050

Dividers for drawers series S4 suitable for modules with width 508 mm and depth 445 mm  
 Drawer load capacity: 40 Kg  
 Available heights: 100 - 150 mm



**EXAMPLE E4 445050 A0** for heights: 100 - 150 mm

Partition example for steel drawer F 22 S4 445050:  
 1 rubber "mat" S4/S5



**EXAMPLE E4 445050 B1** for heights: 100 mm

**EXAMPLE E4 445050 B3** for heights: 150 mm

Partition example for steel drawer F 22 S4 445050 with 2 compartments:  
 1 "divider" S4/S5  
 1 rubber "mat" S4/S5



**EXAMPLE E4 445050 C0** for heights: 100 mm

Partition example for steel drawer F 22 S4 445050 with 28 compartments:  
 28 "yellow" inset boxes



**EXAMPLE E4 445050 D0** for heights: 100 mm

Partition example for steel drawer F 22 S4 445050 with 16 compartments:  
 4 "yellow" inset boxes  
 12 "blue" inset boxes



**EXAMPLE E4 445050 E0** for heights: 100 mm

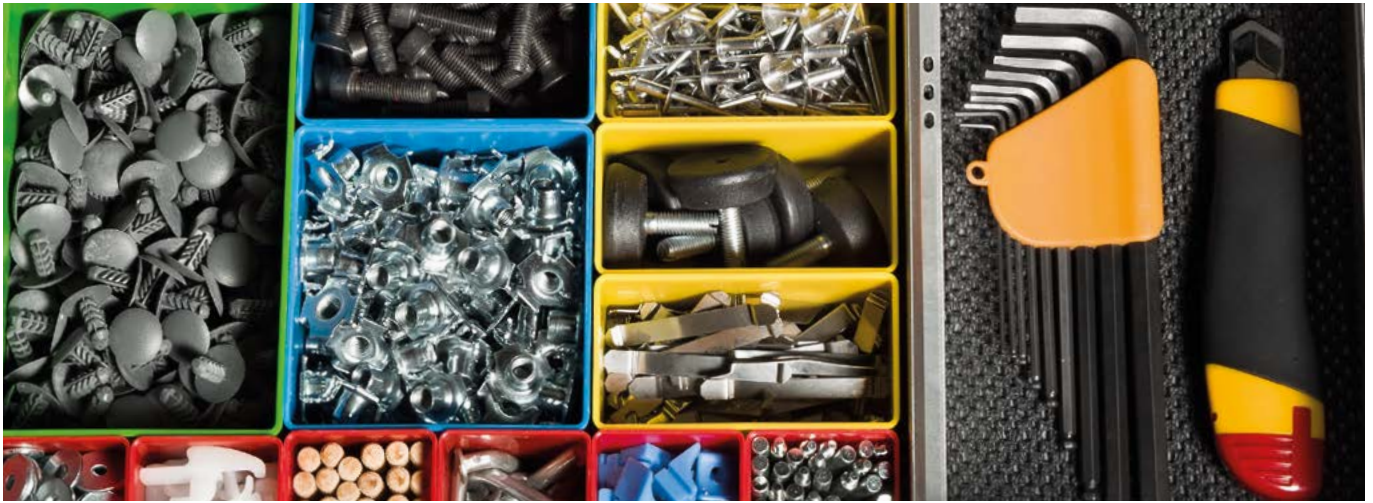
Partition example for steel drawer F 22 S4 445050 with 20 compartments:  
 12 "yellow" inset boxes  
 8 "blue" inset boxes



**EXAMPLE E4 445050 F0** for heights: 100 mm

Partition example for steel drawer F 22 S4 445050 with 10 compartments:  
 1 "yellow" inset box  
 9 "green" inset boxes





**EXAMPLE E4 445050 GO** for heights: 100 mm

Partition example for steel drawer F 22 S4 445050 with 12 compartments:  
8 "blue" inset boxes  
4 "green" inset boxes



**EXAMPLE E4 445050 HO** for heights: 100 mm

Partition example for steel drawer F 22 S4 445050 with 11 compartments:  
4 "yellow" inset boxes  
3 "blue" inset boxes  
2 "green" inset boxes  
2 "forest" inset boxes



**EXAMPLE E4 445050 LO** for heights: 100 mm

Partition example for steel drawer F 22 S4 445050 with 16 compartments:  
8 "yellow" inset boxes  
4 "blue" inset boxes  
4 "green" inset boxes



**EXAMPLE E4 445050 MO** for heights: 100 mm

Partition example for steel drawer F 22 S4 445050 with 19 compartments:  
4 "red" inset boxes  
8 "yellow" inset boxes  
3 "blue" inset boxes  
4 "green" inset boxes



**EXAMPLE E4 445050 NO** for heights: 100 mm

Partition example for steel drawer F 22 S4 445050 with 13 compartments:  
4 "red" inset boxes  
5 "yellow" inset boxes  
2 "blue" inset boxes  
1 "green" inset box  
1 "divider" S4/S5  
1 rubber "mat" S4/S5



**EXAMPLE E4 445050 PO** for heights: 100 mm

Partition example for steel drawer F 22 S4 445050 with 8 compartments:  
2 "yellow" inset boxes  
3 "blue" inset boxes  
2 "green" inset boxes  
1 "divider" S4/S5  
1 rubber "mat" S4/S5



# DIVIDERS E4 445 071

Dividers for drawers series S4 suitable for modules with width 717 mm and depth 445 mm  
Drawer load capacity: 40 Kg  
Available heights: 100 - 150 mm



**EXAMPLE E4 445071 A0** for heights: 100 - 150 mm

Partition example for steel drawer F 22 S4 445071:  
1 rubber "mat" S4/S5



**EXAMPLE E4 445071 B1** for heights: 100 mm

**EXAMPLE E4 445071 B3** for heights: 150 mm

Partition example for steel drawer F 22 S4 445071 with 2 compartments:  
1 "divider" S4/S5  
1 rubber "mat" S4/S5



**EXAMPLE E4 445071 C1** for heights: 100 mm

**EXAMPLE E4 445071 C3** for heights: 150 mm

Partition example for steel drawer F 22 S4 445071 with 3 compartments:  
2 "dividers" S4/S5  
1 rubber "mat" S4/S5



**EXAMPLE E4 445071 D0** for heights: 100 mm

Partition example for steel drawer F 22 S4 445071 with 24 compartments:  
6 "yellow" inset boxes  
18 "blue" inset boxes



**EXAMPLE E4 445071 E0** for heights: 100 mm

Partition example for steel drawer F 22 S4 445071 with 30 compartments:  
18 "yellow" inset boxes  
12 "blue" inset boxes



**EXAMPLE E4 445071 F0** for heights: 100 mm

Partition example for steel drawer F 22 S4 445071 with 14 compartments:  
14 "green" inset boxes



**EXAMPLE E4 445071 G0** for heights: 100 mm

Partition example for steel drawer F 22 S4 445071 with 18 compartments:  
12 "blue" inset boxes  
6 "green" inset boxes



**EXAMPLE E4 445071 H0** for heights: 100 mm

Partition example for steel drawer F 22 S4 445071 with 18 compartments:  
6 "yellow" inset boxes                      2 "forest" inset boxes  
6 "blue" inset boxes  
4 "green" inset boxes



**EXAMPLE E4 445071 L0** for heights: 100 mm

Partition example for steel drawer F 22 S4 445071 with 24 compartments:  
12 "yellow" inset boxes  
6 "blue" inset boxes  
6 "green" inset boxes



**EXAMPLE E4 445071 M0** for heights: 100 mm

Partition example for steel drawer F 22 S4 445071 with 32 compartments:  
8 "red" inset boxes                      4 "green" inset boxes  
14 "yellow" inset boxes  
6 "blue" inset boxes



**EXAMPLE E4 445071 N0** for heights: 100 mm

Partition example for steel drawer F 22 S4 445071 with 19 compartments:  
6 "red" inset boxes                      2 "green" inset boxes  
6 "yellow" inset boxes                      2 "dividers" S4/S5  
3 "blue" inset boxes                      1 rubber "mat" S4/S5



**EXAMPLE E4 445071 P0** for heights: 100 mm

Partition example for steel drawer F 22 S4 445071 with 14 compartments:  
7 "yellow" inset boxes                      1 "divider" S4/S5  
4 "blue" inset boxes                      1 rubber "mat" S4/S5  
2 "green" inset boxes



# DIVIDERS

## E4 508 036

Dividers for drawers series S4 suitable for modules with width 365 mm and depth 508 mm  
 Drawer load capacity: 40 Kg  
 Available heights: 100 - 150 mm



**EXAMPLE E4 508036 A0** for heights: 100 - 150 mm

Partition example for steel drawer F 22 S4 508036:  
 1 rubber "mat" S4



**EXAMPLE E4 508036 B1** for heights: 100 mm

**EXAMPLE E4 508036 B3** for heights: 150 mm

Partition example for steel drawer F 22 S4 508036 with 2 compartments:  
 1 "divider" S4  
 1 rubber "mat" S4



**EXAMPLE E4 508036 C1** for heights: 100 mm

**EXAMPLE E4 508036 C3** for heights: 150 mm

Partition example for steel drawer F 22 S4 508036 with 3 compartments:  
 2 "dividers" S4  
 1 rubber "mat" S4



**EXAMPLE E4 508036 D0** for heights: 100 mm

Partition example for steel drawer F 22 S4 508036 with 23 compartments:  
 1 "red" inset box  
 22 "yellow" inset boxes



**EXAMPLE E4 508036 E0** for heights: 100 mm

Partition example for steel drawer F 22 S4 508036 with 15 compartments:  
 1 "red" inset box  
 6 "yellow" inset boxes  
 8 "blue" inset boxes



**EXAMPLE E4 508036 F0** for heights: 100 mm

Partition example for steel drawer F 22 S4 508036 with 9 compartments:  
 1 "red" inset box  
 1 "yellow" inset box  
 7 "green" inset boxes



**EXAMPLE E4 508036 G0** for heights: 100 mm

Partition example for steel drawer F 22 S4 508036 with 11 compartments:  
 1 "red" inset box                      4 "green" inset boxes  
 2 "yellow" inset boxes  
 4 "blue" inset boxes



**EXAMPLE E4 508036 H0** for heights: 100 mm

Partition example for steel drawer F 22 S4 508036 with 9 compartments:  
 1 "red" inset box                      2 "forest" inset boxes  
 4 "yellow" inset boxes  
 2 "green" inset boxes



**EXAMPLE E4 508036 L0** for heights: 100 mm

Partition example for steel drawer F 22 S4 508036 with 17 compartments:  
 1 "red" inset box                      2 "green" inset boxes  
 12 "yellow" inset boxes  
 2 "blue" inset boxes



**EXAMPLE E4 508036 M0** for heights: 100 mm

Partition example for steel drawer F 22 S4 508036 with 17 compartments:  
 5 "red" inset boxes                      2 "green" inset boxes  
 6 "yellow" inset boxes  
 4 "blue" inset boxes



**EXAMPLE E4 508036 N0** for heights: 100 mm

Partition example for steel drawer F 22 S4 508036 with 13 compartments:  
 5 "red" inset boxes                      1 "green" inset box  
 5 "yellow" inset boxes                      1 "divider" S4  
 1 "blue" inset box                      1 rubber "mat" S4



**EXAMPLE E4 508036 P0** for heights: 100 mm

Partition example for steel drawer F 22 S4 508036 with 10 compartments:  
 5 "yellow" inset boxes                      1 "divider" S4  
 2 "blue" inset boxes                      1 rubber "mat" S4  
 2 "green" inset boxes



# DIVIDERS

## E4 508 044

Dividers for drawers series S4 suitable for modules with width 445 mm and depth 508 mm  
 Drawer load capacity: 40 Kg  
 Available heights: 100 - 150 mm



**EXAMPLE E4 508044 A0** for heights: 100 - 150 mm

Partition example for steel drawer F 22 S4 508044:  
 1 rubber "mat" S4/S5



**EXAMPLE E4 508044 B1** for heights: 100 mm

**EXAMPLE E4 508044 B3** for heights: 150 mm

Partition example for steel drawer F 22 S4 508044 with 2 compartments:  
 1 "divider" S4  
 1 rubber "mat" S4/S5



**EXAMPLE E4 508044 C1** for heights: 100 mm

**EXAMPLE E4 508044 C3** for heights: 150 mm

Partition example for steel drawer F 22 S4 508044 with 3 compartments:  
 2 "dividers" S4  
 1 rubber "mat" S4/S5



**EXAMPLE E4 508044 D0** for heights: 100 mm

Partition example for steel drawer F 22 S4 508044 with 27 compartments:  
 27 "yellow" inset boxes



**EXAMPLE E4 508044 E0** for heights: 100 mm

Partition example for steel drawer F 22 S4 508044 with 15 compartments:  
 3 "yellow" inset boxes  
 12 "blue" inset boxes



**EXAMPLE E4 508044 F0** for heights: 100 mm

Partition example for steel drawer F 22 S4 508044 with 9 compartments:  
 9 "green" inset boxes



**EXAMPLE E4 508044 GO** for heights: 100 mm

Partition example for steel drawer F 22 S4 508044 with 11 compartments:  
 6 "blue" inset boxes  
 5 "green" inset boxes



**EXAMPLE E4 508044 HO** for heights: 100 mm

Partition example for steel drawer F 22 S4 508044 with 8 compartments:  
 3 "blue" inset boxes  
 3 "green" inset boxes  
 2 "forest" inset boxes



**EXAMPLE E4 508044 LO** for heights: 100 mm

Partition example for steel drawer F 22 S4 508044 with 18 compartments:  
 12 "yellow" inset boxes  
 3 "blue" inset boxes  
 3 "green" inset boxes



**EXAMPLE E4 508044 MO** for heights: 100 mm

Partition example for steel drawer F 22 S4 508044 with 21 compartments:  
 6 "red" inset boxes  
 8 "yellow" inset boxes  
 5 "blue" inset boxes  
 2 "green" inset boxes



**EXAMPLE E4 508044 NO** for heights: 100 mm

Partition example for steel drawer F 22 S4 508044 with 13 compartments:  
 4 "red" inset boxes  
 5 "yellow" inset boxes  
 1 "blue" inset box  
 2 "green" inset boxes  
 1 "divider" S4  
 1 rubber "mat" S4/S5



**EXAMPLE E4 508044 PO** for heights: 100 mm

Partition example for steel drawer F 22 S4 508044 with 10 compartments:  
 3 "yellow" inset boxes  
 3 "blue" inset boxes  
 3 "green" inset boxes  
 1 "divider" S4  
 1 rubber "mat" S4/S5



# DIVIDERS

## E5 365 050

Dividers for drawers series S5 suitable for modules with width 508 mm and depth 365 mm  
 Drawer load capacity: 50 Kg  
 Available heights: 75 - 100 - 125 - 150 - 200 mm



**EXAMPLE E5 365050 A0** for heights: 75 - 100 - 125 - 150 - 200 mm

Partition example for steel drawer F 22 S5 365050:  
 1 rubber "mat" S4/S5



**EXAMPLE E5 365050 B0** for heights: 75 mm

**EXAMPLE E5 365050 B1** for heights: 100 mm

**EXAMPLE E5 365050 B2** for heights: 125 mm

**EXAMPLE E5 365050 B3** for heights: 150 mm

**EXAMPLE E5 365050 B4** for heights: 200 mm

Partition example for steel drawer F 22 S5 365050 with 2 compartments:  
 1 "divider" S4/S5  
 1 rubber "mat" S4/S5



**EXAMPLE E5 365050 C0** for heights: 100 mm

Partition example for steel drawer F 22 S5 365050 with 21 compartments:  
 21 "yellow" inset boxes  
 1 "adapter" S5



**EXAMPLE E5 365050 D0** for heights: 100 mm

Partition example for steel drawer F 22 S5 365050 with 12 compartments:  
 3 "yellow" inset boxes  
 9 "blue" inset boxes  
 1 "adapter" S5



**EXAMPLE E5 365050 E0** for heights: 100 mm

Partition example for steel drawer F 22 S5 365050 with 15 compartments:  
 9 "yellow" inset boxes  
 6 "blue" inset boxes  
 1 "adapter" S5



**EXAMPLE E5 365050 F0** for heights: 100 mm

Partition example for steel drawer F 22 S5 365050 with 7 compartments:  
 7 "green" inset boxes  
 1 "adapter" S5





**EXAMPLE E5 365050 GO** for heights: 100 mm

Partition example for steel drawer F 22 S5 365050 with 9 compartments:  
 6 "blue" inset boxes  
 3 "green" inset boxes  
 1 "adapter" S5



**EXAMPLE E5 365050 HO** for heights: 100 mm

Partition example for steel drawer F 22 S5 365050 with 7 compartments:  
 3 "blue" inset boxes  
 3 "green" inset boxes  
 1 "forest" inset box  
 1 "adapter" S5



**EXAMPLE E5 365050 LO** for heights: 100 mm

Partition example for steel drawer F 22 S5 365050 with 12 compartments:  
 6 "yellow" inset boxes  
 3 "blue" inset boxes  
 3 "green" inset boxes  
 1 "adapter" S5



**EXAMPLE E5 365050 MO** for heights: 100 mm

Partition example for steel drawer F 22 S5 365050 with 17 compartments:  
 6 "red" inset boxes  
 6 "yellow" inset boxes  
 3 "blue" inset boxes  
 2 "green" inset boxes  
 1 "adapter" S5



**EXAMPLE E5 365050 NO** for heights: 100 mm

Partition example for steel drawer F 22 S5 365050 with 6 compartments:  
 3 "yellow" inset boxes  
 3 "forest" inset boxes  
 1 "adapter" S5



**EXAMPLE E5 365050 PO** for heights: 100 mm

Partition example for steel drawer F 22 S5 365050 with 11 compartments:  
 9 "yellow" inset boxes  
 2 "forest" inset boxes  
 1 "adapter" S5



# DIVIDERS

## E5 365 071

Dividers for drawers series S5 suitable for modules with width 717 mm and depth 365 mm  
 Drawer load capacity: 50 Kg  
 Available heights: 75 - 100 - 125 - 150 - 200 mm



**EXAMPLE E5 365071 A0** for heights: 75 - 100 - 125 - 150 - 200 mm

Partition example for steel drawer F 22 S5 365071:  
 1 rubber "mat" S4/S5



**EXAMPLE E5 365071 B0** for heights: 75 mm

**EXAMPLE E5 365071 B1** for heights: 100 mm

**EXAMPLE E5 365071 B2** for heights: 125 mm

**EXAMPLE E5 365071 B3** for heights: 150 mm

**EXAMPLE E5 365071 B4** for heights: 200 mm

Partition example for steel drawer F 22 S5 365071 with 2 compartments:  
 1 "divider" S4/S5  
 1 rubber "mat" S4/S5



**EXAMPLE E5 365071 C0** for heights: 75 mm

**EXAMPLE E5 365071 C1** for heights: 100 mm

**EXAMPLE E5 365071 C2** for heights: 125 mm

**EXAMPLE E5 365071 C3** for heights: 150 mm

**EXAMPLE E5 365071 C4** for heights: 200 mm

Partition example for steel drawer F 22 S5 365071 with 3 compartments:  
 2 "dividers" S4/S5  
 1 rubber "mat" S4/S5



**EXAMPLE E5 365071 D0** for heights: 100 mm

Partition example for steel drawer F 22 S5 365071 with 18 compartments:  
 3 "yellow" inset boxes  
 15 "blue" inset boxes  
 1 "adapter" S5



**EXAMPLE E5 365071 E0** for heights: 100 mm

Partition example for steel drawer F 22 S5 365071 with 24 compartments:  
 15 "yellow" inset boxes  
 9 "blue" inset boxes  
 1 "adapter" S5



**EXAMPLE E5 365071 F0** for heights: 100 mm

Partition example for steel drawer F 22 S5 365071 with 11 compartments:  
 11 "green" inset boxes  
 1 "adapter" S5



**EXAMPLE E5 365071 G0** for heights: 100 mm

Partition example for steel drawer F 22 S5 365071 with 14 compartments:  
 9 "blue" inset boxes  
 5 "green" inset boxes  
 1 "adapter" S5



**EXAMPLE E5 365071 H0** for heights: 100 mm

Partition example for steel drawer F 22 S5 365071 with 11 compartments:  
 6 "blue" inset boxes  
 3 "green" inset boxes  
 2 "forest" inset boxes  
 1 "adapter" S5



**EXAMPLE E5 365071 L0** for heights: 100 mm

Partition example for steel drawer F 22 S5 365071 with 19 compartments:  
 9 "yellow" inset boxes  
 6 "blue" inset boxes  
 4 "green" inset boxes  
 1 "adapter" S5



**EXAMPLE E5 365071 M0** for heights: 100 mm

Partition example for steel drawer F 22 S5 365071 with 25 compartments:  
 8 "red" inset boxes  
 8 "yellow" inset boxes  
 6 "blue" inset boxes  
 3 "green" inset boxes  
 1 "adapter" S5



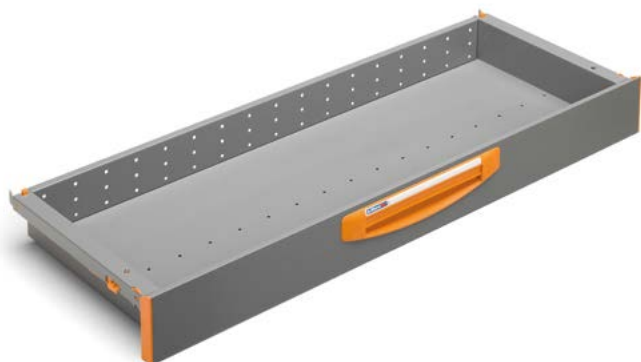
**EXAMPLE E5 365071 N0** for heights: 100 mm

Partition example for steel drawer F 22 S5 365071 with 8 compartments:  
 3 "yellow" inset boxes  
 5 "forest" inset boxes  
 1 "adapter" S5



**EXAMPLE E5 365071 P0** for heights: 100 mm

Partition example for steel drawer F 22 S5 365071 with 18 compartments:  
 15 "yellow" inset boxes  
 3 "forest" inset boxes  
 1 "adapter" S5



# DIVIDERS

## E5 365 101

Dividers for drawers series S5 suitable for modules with width 1016 mm and depth 365 mm  
 Drawer load capacity: 50 Kg  
 Available heights: 75 - 100 - 125 - 150 - 200 mm



**EXAMPLE E5 365101 A0** for heights: 75 - 100 - 125 - 150 - 200 mm

Partition example for steel drawer F 22 S5 365101:  
 1 rubber "mat" S4/S5



**EXAMPLE E5 365101 B0** for heights: 75 mm

**EXAMPLE E5 365101 B1** for heights: 100 mm

**EXAMPLE E5 365101 B2** for heights: 125 mm

**EXAMPLE E5 365101 B3** for heights: 150 mm

**EXAMPLE E5 365101 B4** for heights: 200 mm

Partition example for steel drawer F 22 S5 365101 with 3 compartments:  
 2 "dividers" S4/S5  
 1 rubber "mat" S4/S5



**EXAMPLE E5 365101 C0** for heights: 75 mm

**EXAMPLE E5 365101 C1** for heights: 100 mm

**EXAMPLE E5 365101 C2** for heights: 125 mm

**EXAMPLE E5 365101 C3** for heights: 150 mm

**EXAMPLE E5 365101 C4** for heights: 200 mm

Partition example for steel drawer F 22 S5 365101 with 4 compartments:  
 3 "dividers" S4/S5  
 1 rubber "mat" S4/S5



**EXAMPLE E5 365101 D0** for heights: 100 mm

Partition example for steel drawer F 22 S5 365101 with 27 compartments:  
 3 "yellow" inset boxes  
 24 "blue" inset boxes



**EXAMPLE E5 365101 E0** for heights: 100 mm

Partition example for steel drawer F 22 S5 365101 with 39 compartments:  
 27 "yellow" inset boxes  
 12 "blue" inset boxes



**EXAMPLE E5 365101 F0** for heights: 100 mm

Partition example for steel drawer F 22 S5 365101 with 17 compartments:  
 17 "green" inset boxes



**EXAMPLE E5 365101 G0** for heights: 100 mm

Partition example for steel drawer F 22 S5 365101 with 21 compartments:  
12 "blue" inset boxes  
9 "green" inset boxes



**EXAMPLE E5 365101 H0** for heights: 100 mm

Partition example for steel drawer F 22 S5 365101 with 17 compartments:  
9 "blue" inset boxes  
5 "green" inset boxes  
3 "forest" inset boxes



**EXAMPLE E5 365101 L0** for heights: 100 mm

Partition example for steel drawer F 22 S5 365101 with 28 compartments:  
12 "yellow" inset boxes  
9 "blue" inset boxes  
7 "green" inset boxes



**EXAMPLE E5 365101 M0** for heights: 100 mm

Partition example for steel drawer F 22 S5 365101 with 34 compartments:  
8 "red" inset boxes  
11 "yellow" inset boxes  
9 "blue" inset boxes  
6 "green" inset boxes



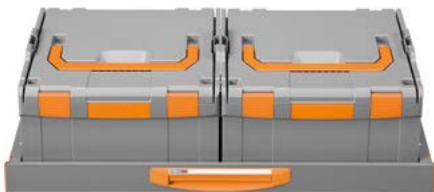
**EXAMPLE E5 365101 N0** for heights: 100 mm

Partition example for steel drawer F 22 S5 365101 with 23 compartments:  
6 "red" inset boxes  
6 "yellow" inset boxes  
6 "blue" inset boxes  
3 "green" inset boxes  
2 "dividers" S4/S5  
1 rubber "mat" S4/S5  
2 "adapters" S5



**EXAMPLE E5 365101 P0** for heights: 100 mm

Partition example for steel drawer F 22 S5 365101 with 18 compartments:  
6 "yellow" inset boxes  
6 "blue" inset boxes  
5 "green" inset boxes  
1 "divider" S4/S5  
1 rubber "mat" S4/S5  
2 "adapters" S5



**EXAMPLE E5 365101 R0** for heights: 75 mm

Example for steel drawer F 22 S5 365101 with 2 cases:  
2 Store Box 238  
1 rubber "mat" S4/S5



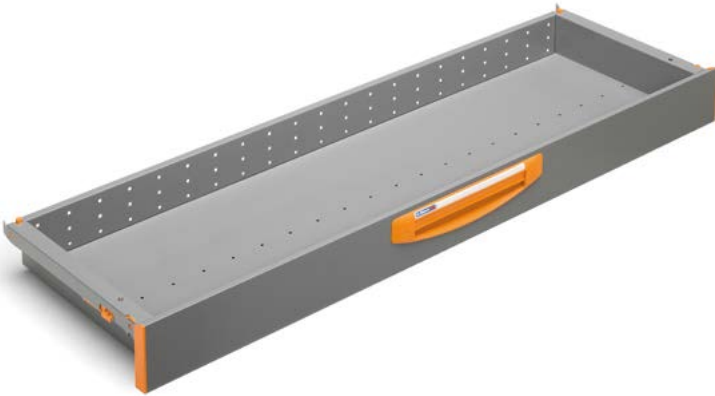
**EXAMPLE E5 365101 S0** for heights: 100 mm

Example for steel drawer F 22 S5 365101 with 2 cases:  
2 Store Box 374  
1 rubber "mat" S4/S5

# DIVIDERS

## E5 365 122

Dividers for drawers series S5 suitable for modules with width 1225 mm and depth 365 mm  
 Drawer load capacity: 50 Kg  
 Available heights: 75 - 100 - 125 - 150 - 200 mm



**EXAMPLE E5 365122 A0** for heights: 75 - 100 - 125 - 150 - 200 mm

Partition example for steel drawer F 22 S5 365122:  
 1 rubber "mat" S4/S5



**EXAMPLE E5 365122 B0** for heights: 75 mm

**EXAMPLE E5 365122 B1** for heights: 100 mm

**EXAMPLE E5 365122 B2** for heights: 125 mm

**EXAMPLE E5 365122 B3** for heights: 150 mm

**EXAMPLE E5 365122 B4** for heights: 200 mm

Partition example for steel drawer F 22 S5 365122 with 3 compartments:  
 2 "dividers" S4/S5  
 1 rubber "mat" S4/S5



**EXAMPLE E5 365122 C0** for heights: 75 mm

**EXAMPLE E5 365122 C1** for heights: 100 mm

**EXAMPLE E5 365122 C2** for heights: 125 mm

**EXAMPLE E5 365122 C3** for heights: 150 mm

**EXAMPLE E5 365122 C4** for heights: 200 mm

Partition example for steel drawer F 22 S5 365122 with 4 compartments:  
 3 "dividers" S4/S5  
 1 rubber "mat" S4/S5



**EXAMPLE E5 365122 D0** for heights: 100 mm

Partition example for steel drawer F 22 S5 365122 with 33 compartments:  
 3 "yellow" inset boxes  
 30 "blue" inset boxes



**EXAMPLE E5 365122 E0** for heights: 100 mm

Partition example for steel drawer F 22 S5 365122 with 45 compartments:  
 27 "yellow" inset boxes  
 18 "blue" inset boxes



**EXAMPLE E5 365122 F0** for heights: 100 mm

Partition example for steel drawer F 22 S5 365122 with 21 compartments:  
 21 "green" inset boxes



**EXAMPLE E5 365122 G0** for heights: 100 mm

Partition example for steel drawer F 22 S5 365122 with 26 compartments:  
15 "blue" inset boxes  
11 "green" inset boxes



**EXAMPLE E5 365122 H0** for heights: 100 mm

Partition example for steel drawer F 22 S5 365122 with 21 compartments:  
9 "blue" inset boxes  
9 "green" inset boxes  
3 "forest" inset boxes



**EXAMPLE E5 365122 L0** for heights: 100 mm

Partition example for steel drawer F 22 S5 365122 with 37 compartments:  
18 "yellow" inset boxes  
12 "blue" inset boxes  
7 "green" inset boxes



**EXAMPLE E5 365122 M0** for heights: 100 mm

Partition example for steel drawer F 22 S5 365122 with 47 compartments:  
10 "red" inset boxes  
22 "yellow" inset boxes  
9 "blue" inset boxes  
6 "green" inset boxes



**EXAMPLE E5 365122 N0** for heights: 100 mm

Partition example for steel drawer F 22 S5 365122 with 22 compartments:  
4 "red" inset boxes  
7 "yellow" inset boxes  
6 "blue" inset boxes  
3 "green" inset boxes  
2 "dividers" S4/S5  
1 rubber "mat" S4/S5  
2 "adapters" S5



**EXAMPLE E5 365122 P0** for heights: 100 mm

Partition example for steel drawer F 22 S5 365122 with 24 compartments:  
9 "yellow" inset boxes  
9 "blue" inset boxes  
5 "green" inset boxes  
1 "divider" S4/S5  
1 rubber "mat" S4/S5  
2 "adapters" S5



**EXAMPLE E5 365122 R0** for heights: 75 mm

Example for steel drawer F 22 S5 365122 with 2 cases and 2 boxes:  
2 Store Box 238  
2 boxes size 2115A with holder  
1 rubber "mat" S4/S5



**EXAMPLE E5 365122 S0** for heights: 100 mm

Example for steel drawer F 22 S5 365122 with 2 cases and 2 boxes:  
2 Store Box 374  
2 boxes size 2115A with holder  
1 rubber "mat" S4/S5



# DIVIDERS

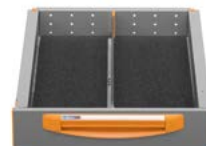
## E5 445 050

Dividers for drawers series S5 suitable for modules with width 508 mm and depth 445 mm  
 Drawer load capacity: 50 Kg  
 Available heights: 75 - 100 - 125 - 150 - 200 mm



**EXAMPLE E5 445050 A0** for heights: 75 - 100 - 125 - 150 - 200 mm

Partition example for steel drawer F 22 S5 445050:  
 1 rubber "mat" S4/S5



**EXAMPLE E5 445050 B0** for heights: 75 mm

**EXAMPLE E5 445050 B1** for heights: 100 mm

**EXAMPLE E5 445050 B2** for heights: 125 mm

**EXAMPLE E5 445050 B3** for heights: 150 mm

**EXAMPLE E5 445050 B4** for heights: 200 mm

Partition example for steel drawer F 22 S5 445050 with 2 compartments:  
 1 "divider" S4/S5  
 1 rubber "mat" S4/S5



**EXAMPLE E5 445050 C0** for heights: 100 mm

Partition example for steel drawer F 22 S5 445050 with 26 compartments:  
 3 "red" inset boxes  
 23 "yellow" inset boxes  
 1 "adapter" S5



**EXAMPLE E5 445050 D0** for heights: 100 mm

Partition example for steel drawer F 22 S5 445050 with 17 compartments:  
 3 "red" inset boxes  
 5 "yellow" inset boxes  
 9 "blue" inset boxes  
 1 "adapter" S5



**EXAMPLE E5 445050 E0** for heights: 100 mm

Partition example for steel drawer F 22 S5 445050 with 20 compartments:  
 3 "red" inset boxes  
 11 "yellow" inset boxes  
 6 "blue" inset boxes  
 1 "adapter" S5



**EXAMPLE E5 445050 F0** for heights: 100 mm

Partition example for steel drawer F 22 S5 445050 with 12 compartments:  
 3 "red" inset boxes  
 2 "yellow" inset boxes  
 7 "green" inset boxes  
 1 "adapter" S5





**EXAMPLE E5 445050 GO** for heights: 100 mm

Partition example for steel drawer F 22 S5 445050 with 14 compartments:

3 "red" inset boxes                      3 "green" inset boxes  
2 "yellow" inset boxes                  1 "adapter" S5  
6 "blue" inset boxes



**EXAMPLE E5 445050 HO** for heights: 100 mm

Partition example for steel drawer F 22 S5 445050 with 12 compartments:

3 "red" inset boxes                      3 "green" inset boxes  
2 "yellow" inset boxes                  1 "forest" inset box  
3 "blue" inset boxes                      1 "adapter" S5



**EXAMPLE E5 445050 LO** for heights: 100 mm

Partition example for steel drawer F 22 S5 445050 with 17 compartments:

3 "red" inset boxes                      3 "green" inset boxes  
8 "yellow" inset boxes                  1 "adapter" S5  
3 "blue" inset boxes



**EXAMPLE E5 445050 MO** for heights: 100 mm

Partition example for steel drawer F 22 S5 445050 with 21 compartments:

9 "red" inset boxes                      2 "green" inset boxes  
6 "yellow" inset boxes                  1 "adapter" S5  
4 "blue" inset boxes



**EXAMPLE E5 445050 NO** for heights: 100 mm

Partition example for steel drawer F 22 S5 445050 with 10 compartments:

1 "red" inset box                          1 "adapter" S5  
6 "yellow" inset boxes  
3 "forest" inset boxes



**EXAMPLE E5 445050 PO** for heights: 100 mm

Partition example for steel drawer F 22 S5 445050 with 16 compartments:

3 "red" inset boxes                      1 "adapter" S5  
11 "yellow" inset boxes  
2 "forest" inset boxes



# DIVIDERS

## E5 445 071

Dividers for drawers series S5 suitable for modules with width 717 mm and depth 445 mm  
 Drawer load capacity: 50 Kg  
 Available heights: 75 - 100 - 125 - 150 - 200 mm



**EXAMPLE E5 445071 A0** for heights: 75 - 100 - 125 - 150 - 200 mm

Partition example for steel drawer F 22 S5 445071:  
 1 rubber "mat" S4/S5



**EXAMPLE E5 445071 B0** for heights: 75 mm

**EXAMPLE E5 445071 B1** for heights: 100 mm

**EXAMPLE E5 445071 B2** for heights: 125 mm

**EXAMPLE E5 445071 B3** for heights: 150 mm

**EXAMPLE E5 445071 B4** for heights: 200 mm

Partition example for steel drawer F 22 S5 445071 with 2 compartments:  
 1 "divider" S4/S5  
 1 rubber "mat" S4/S5



**EXAMPLE E5 445071 C0** for heights: 75 mm

**EXAMPLE E5 445071 C1** for heights: 100 mm

**EXAMPLE E5 445071 C2** for heights: 125 mm

**EXAMPLE E5 445071 C3** for heights: 150 mm

**EXAMPLE E5 445071 C4** for heights: 200 mm

Partition example for steel drawer F 22 S5 445071 with 3 compartments:  
 2 "dividers" S4/S5  
 1 rubber "mat" S4/S5



**EXAMPLE E5 445071 D0** for heights: 100 mm

Partition example for steel drawer F 22 S5 445071 with 25 compartments:  
 3 "red" inset boxes  
 7 "yellow" inset boxes  
 15 "blue" inset boxes  
 1 "adapter" S5



**EXAMPLE E5 445071 E0** for heights: 100 mm

Partition example for steel drawer F 22 S5 445071 with 28 compartments:  
 3 "red" inset boxes  
 13 "yellow" inset boxes  
 12 "blue" inset boxes  
 1 "adapter" S5



**EXAMPLE E5 445071 F0** for heights: 100 mm

Partition example for steel drawer F 22 S5 445071 with 18 compartments:  
 3 "red" inset boxes  
 4 "yellow" inset boxes  
 11 "green" inset boxes  
 1 "adapter" S5



**EXAMPLE E5 445071 G0** for heights: 100 mm

Partition example for steel drawer F 22 S5 445071 with 20 compartments:  
 3 "red" inset boxes                      5 "green" inset boxes  
 2 "yellow" inset boxes                  1 "adapter" S5  
 10 "blue" inset boxes



**EXAMPLE E5 445071 H0** for heights: 100 mm

Partition example for steel drawer F 22 S5 445071 with 18 compartments:  
 3 "red" inset boxes                      3 "green" inset boxes  
 4 "yellow" inset boxes                  2 "forest" inset boxes  
 6 "blue" inset boxes                      1 "adapter" S5



**EXAMPLE E5 445071 L0** for heights: 100 mm

Partition example for steel drawer F 22 S5 445071 with 26 compartments:  
 3 "red" inset boxes                      4 "forest" inset boxes  
 13 "yellow" inset boxes                  1 "adapter" S5  
 6 "blue" inset boxes



**EXAMPLE E5 445071 M0** for heights: 100 mm

Partition example for steel drawer F 22 S5 445071 with 31 compartments:  
 9 "red" inset boxes                      3 "green" inset boxes  
 13 "yellow" inset boxes                  1 "adapter" S5  
 6 "blue" inset boxes



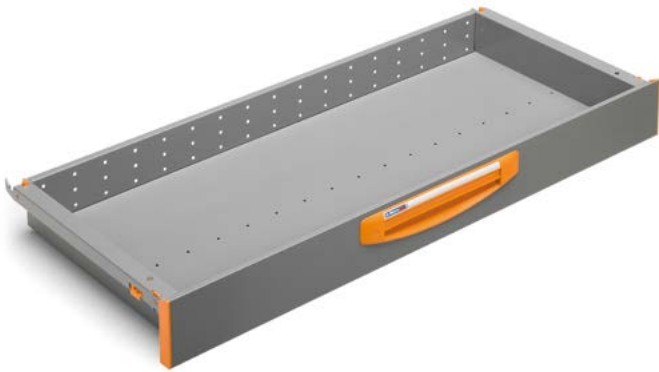
**EXAMPLE E5 445071 N0** for heights: 100 mm

Partition example for steel drawer F 22 S5 445071 with 14 compartments:  
 3 "red" inset boxes                      4 "forest" inset boxes  
 4 "yellow" inset boxes                  1 "adapter" S5  
 3 "green" inset boxes



**EXAMPLE E5 445071 P0** for heights: 100 mm

Partition example for steel drawer F 22 S5 445071 with 16 compartments:  
 3 "red" inset boxes                      3 "green" inset boxes  
 4 "yellow" inset boxes                  3 "forest" inset boxes  
 3 "blue" inset boxes                      1 "adapter" S5



# DIVIDERS

## E5 445 101

Dividers for drawers series S5 suitable for modules with width 1016 mm and depth 445 mm  
 Drawer load capacity: 50 Kg  
 Available heights: 75 - 100 - 125 - 150 - 200 mm



**EXAMPLE E5 445101 A0** for heights: 75 - 100 - 125 - 150 - 200 mm

Partition example for steel drawer F 22 S5 445101:  
 1 rubber "mat" S4/S5



**EXAMPLE E5 445101 B0** for heights: 75 mm

**EXAMPLE E5 445101 B1** for heights: 100 mm

**EXAMPLE E5 445101 B2** for heights: 125 mm

**EXAMPLE E5 445101 B3** for heights: 150 mm

**EXAMPLE E5 445101 B4** for heights: 200 mm

Partition example for steel drawer F 22 S5 445101 with 3 compartments:  
 2 "dividers" S4/S5  
 1 rubber "mat" S4/S5



**EXAMPLE E5 445101 C0** for heights: 75 mm

**EXAMPLE E5 445101 C1** for heights: 100 mm

**EXAMPLE E5 445101 C2** for heights: 125 mm

**EXAMPLE E5 445101 C3** for heights: 150 mm

**EXAMPLE E5 445101 C4** for heights: 200 mm

Partition example for steel drawer F 22 S5 445101 with 4 compartments:  
 3 "dividers" S4/S5  
 1 rubber "mat" S4/S5



**EXAMPLE E5 445101 D0** for heights: 100 mm

Partition example for steel drawer F 22 S5 445101 with 36 compartments:  
 1 "red" inset box  
 11 "yellow" inset boxes  
 24 "blue" inset boxes



**EXAMPLE E5 445101 E0** for heights: 100 mm

Partition example for steel drawer F 22 S5 445101 with 48 compartments:  
 1 "red" inset box  
 35 "yellow" inset boxes  
 12 "blue" inset boxes



**EXAMPLE E5 445101 F0** for heights: 100 mm

Partition example for steel drawer F 22 S5 445101 with 28 compartments:  
 1 "red" inset box  
 11 "yellow" inset boxes  
 16 "green" inset boxes



**EXAMPLE E5 445101 G0** for heights: 100 mm

Partition example for steel drawer F 22 S5 445101 with 28 compartments:  
 1 "red" inset box                      10 "green" inset boxes  
 5 "yellow" inset boxes  
 12 "blue" inset boxes



**EXAMPLE E5 445101 H0** for heights: 100 mm

Partition example for steel drawer F 22 S5 445101 with 26 compartments:  
 1 "red" inset box                      5 "green" inset boxes  
 8 "yellow" inset boxes                3 "forest" inset boxes  
 9 "blue" inset boxes



**EXAMPLE E5 445101 L0** for heights: 100 mm

Partition example for steel drawer F 22 S5 445101 with 38 compartments:  
 1 "red" inset box                      6 "green" inset boxes  
 21 "yellow" inset boxes  
 10 "blue" inset boxes



**EXAMPLE E5 445101 M0** for heights: 100 mm

Partition example for steel drawer F 22 S5 445101 with 38 compartments:  
 5 "red" inset boxes                      6 "green" inset boxes  
 15 "yellow" inset boxes  
 12 "blue" inset boxes



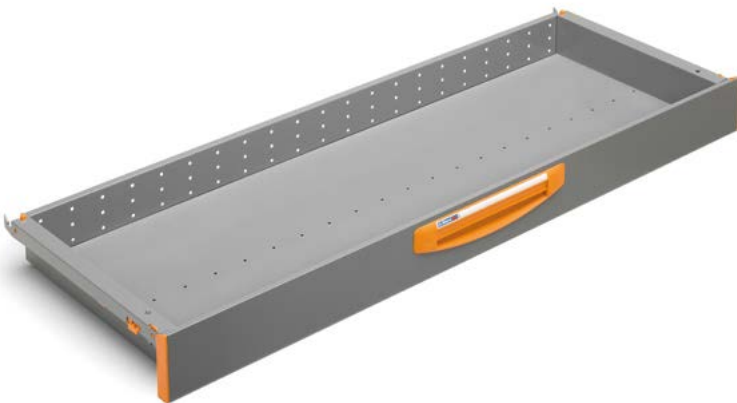
**EXAMPLE E5 445101 N0** for heights: 100 mm

Partition example for steel drawer F 22 S5 445101 with 21 compartments:  
 4 "red" inset boxes                      2 "dividers" S4/S5  
 7 "yellow" inset boxes                1 rubber "mat" S4/S5  
 5 "blue" inset boxes                    2 "adapters" S5  
 3 "green" inset boxes



**EXAMPLE E5 445101 P0** for heights: 100 mm

Partition example for steel drawer F 22 S5 445101 with 24 compartments:  
 1 "red" inset box                      1 "divider" S4/S5  
 11 "yellow" inset boxes                1 rubber "mat" S4/S5  
 6 "blue" inset boxes                    2 "adapters" S5  
 5 "green" inset boxes



# DIVIDERS

## E5 445 122

Dividers for drawers series S5 suitable for modules with width 1225 mm and depth 445 mm  
 Drawer load capacity: 50 Kg  
 Available heights: 75 - 100 - 125 - 150 - 200 mm



**EXAMPLE E5 445122 A0** for heights: 75 - 100 - 125 - 150 - 200 mm

Partition example for steel drawer F 22 S5 445122:  
 1 rubber "mat" S4/S5



**EXAMPLE E5 445122 B0** for heights: 75 mm

**EXAMPLE E5 445122 B1** for heights: 100 mm

**EXAMPLE E5 445122 B2** for heights: 125 mm

**EXAMPLE E5 445122 B3** for heights: 150 mm

**EXAMPLE E5 445122 B4** for heights: 200 mm

Partition example for steel drawer F 22 S5 445122 with 3 compartments:  
 2 "dividers" S4/S5  
 1 rubber "mat" S4/S5



**EXAMPLE E5 445122 C0** for heights: 75 mm

**EXAMPLE E5 445122 C1** for heights: 100 mm

**EXAMPLE E5 445122 C2** for heights: 125 mm

**EXAMPLE E5 445122 C3** for heights: 150 mm

**EXAMPLE E5 445122 C4** for heights: 200 mm

Partition example for steel drawer F 22 S5 445122 with 4 compartments:  
 3 "dividers" S4/S5  
 1 rubber "mat" S4/S5



**EXAMPLE E5 445122 D0** for heights: 100 mm

Partition example for steel drawer F 22 S5 445122 with 44 compartments:  
 1 "red" inset box  
 13 "yellow" inset boxes  
 30 "blue" inset boxes



**EXAMPLE E5 445122 E0** for heights: 100 mm

Partition example for steel drawer F 22 S5 445122 with 59 compartments:  
 1 "red" inset box  
 43 "yellow" inset boxes  
 15 "blue" inset boxes



**EXAMPLE E5 445122 F0** for heights: 100 mm

Partition example for steel drawer F 22 S5 445122 with 34 compartments:  
 1 "red" inset box  
 13 "yellow" inset boxes  
 20 "green" inset boxes



**EXAMPLE E5 445122 G0** for heights: 100 mm

Partition example for steel drawer F 22 S5 445122 with 34 compartments:  
 1 "red" inset box                      12 "green" inset boxes  
 5 "yellow" inset boxes  
 16 "blue" inset boxes



**EXAMPLE E5 445122 H0** for heights: 100 mm

Partition example for steel drawer F 22 S5 445122 with 34 compartments:  
 1 "red" inset box                      8 "green" inset boxes  
 13 "yellow" inset boxes              3 "forest" inset boxes  
 9 "blue" inset boxes



**EXAMPLE E5 445122 L0** for heights: 100 mm

Partition example for steel drawer F 22 S5 445122 with 46 compartments:  
 1 "red" inset box                      8 "green" inset boxes  
 25 "yellow" inset boxes  
 12 "blue" inset boxes



**EXAMPLE E5 445122 M0** for heights: 100 mm

Partition example for steel drawer F 22 S5 445122 with 54 compartments:  
 9 "red" inset boxes                      6 "green" inset boxes  
 27 "yellow" inset boxes  
 12 "blue" inset boxes



**EXAMPLE E5 445122 N0** for heights: 100 mm

Partition example for steel drawer F 22 S5 445122 with 29 compartments:  
 8 "red" inset boxes                      2 "dividers" S4/S5  
 10 "yellow" inset boxes                1 rubber "mat" S4/S5  
 6 "blue" inset boxes                    2 "adapters" S5  
 3 "green" inset boxes



**EXAMPLE E5 445122 P0** for heights: 100 mm

Partition example for steel drawer F 22 S5 445122 with 30 compartments:  
 14 "yellow" inset boxes                1 "divider" S4/S5  
 10 "blue" inset boxes                   1 rubber "mat" S4/S5  
 5 "green" inset boxes                   2 "adapters" S5



# DIVIDERS

## E8 091 042

Dividers for drawers series S8 suitable for modules with width 423 mm and depth 916 mm  
 Drawer load capacity: 80 Kg  
 Available heights: 100 - 200 mm



**EXAMPLE E8 091042 A0** for heights: 100 - 200 mm

Partition example for steel drawer F 22 S8 091042:  
 1 rubber "mat" S4/S5



**EXAMPLE E8 091042 B1** for heights: 100 mm

**EXAMPLE E8 091042 B4** for heights: 200 mm

Partition example for steel drawer F 22 S8 091042 with 3 compartments:  
 2 "dividers" S8  
 1 rubber "mat" S4/S5



**EXAMPLE E8 091042 C1** for heights: 100 mm

**EXAMPLE E8 091042 C4** for heights: 200 mm

Partition example for steel drawer F 22 S8 091042 with 4 compartments:  
 3 "dividers" S8  
 1 rubber "mat" S4/S5



**EXAMPLE E8 091042 D0** for heights: 100 mm

Partition example for steel drawer F 22 S8 091042 with 24 compartments:  
 24 "blue" inset boxes



**EXAMPLE E8 091042 E0** for heights: 100 mm

Partition example for steel drawer F 22 S8 091042 with 36 compartments:  
 24 "yellow" inset boxes  
 12 "blue" inset boxes



**EXAMPLE E8 091042 F0** for heights: 100 mm

Partition example for steel drawer F 22 S8 091042 with 16 compartments:  
 16 "green" inset boxes





**EXAMPLE E8 091042 G0** for heights: 100 mm

Partition example for steel drawer F 22 S8 091042 with 20 compartments:  
12 "blue" inset boxes  
8 "green" inset boxes



**EXAMPLE E8 091042 H0** for heights: 100 mm

Partition example for steel drawer F 22 S8 091042 with 15 compartments:  
6 "blue" inset boxes  
6 "green" inset boxes  
3 "forest" inset boxes



**EXAMPLE E8 091042 L0** for heights: 100 mm

Partition example for steel drawer F 22 S8 091042 with 29 compartments:  
15 "yellow" inset boxes  
9 "blue" inset boxes  
5 "green" inset boxes



**EXAMPLE E8 091042 M0** for heights: 100 mm

Partition example for steel drawer F 22 S8 091042 with 34 compartments:  
8 "red" inset boxes  
14 "yellow" inset boxes  
6 "green" inset boxes  
6 "blue" inset boxes



**EXAMPLE E8 091042 N0** for heights: 100 mm

Partition example for steel drawer F 22 S8 091042 with 20 compartments:  
6 "red" inset boxes  
6 "yellow" inset boxes  
3 "blue" inset boxes  
3 "green" inset boxes  
2 "dividers" S8  
1 rubber "mat" S4/S5



**EXAMPLE E8 091042 P0** for heights: 100 mm

Partition example for steel drawer F 22 S8 091042 with 17 compartments:  
6 "yellow" inset boxes  
6 "blue" inset boxes  
4 "green" inset boxes  
1 "divider" S8  
1 rubber "mat" S4/S5



# DIVIDERS

## E8 091 058

Dividers for drawers series S8 suitable for modules with width 580 mm and depth 916 mm  
 Drawer load capacity: 80 Kg  
 Available heights: 100 - 200 mm



**EXAMPLE E8 091058 A0** for heights: 100 - 200 mm

Partition example for steel drawer F 22 S8 091058:  
 1 rubber "mat" S8



**EXAMPLE E8 091058 B1** for heights: 100 mm

**EXAMPLE E8 091058 B4** for heights: 200 mm

Partition example for steel drawer F 22 S8 091058 with 3 compartments:  
 2 "dividers" S8  
 1 rubber "mat" S8



**EXAMPLE E8 091058 C1** for heights: 100 mm

**EXAMPLE E8 091058 C4** for heights: 200 mm

Partition example for steel drawer F 22 S8 091058 with 4 compartments:  
 3 "dividers" S8  
 1 rubber "mat" S8



**EXAMPLE E8 091058 D0** for heights: 100 mm

Partition example for steel drawer F 22 S8 091058 with 40 compartments:  
 8 "yellow" inset boxes  
 32 "blue" inset boxes



**EXAMPLE E8 091058 E0** for heights: 100 mm

Partition example for steel drawer F 22 S8 091058 with 52 compartments:  
 32 "yellow" inset boxes  
 20 "blue" inset boxes



**EXAMPLE E8 091058 F0** for heights: 100 mm

Partition example for steel drawer F 22 S8 091058 with 24 compartments:  
 24 "green" inset boxes



**EXAMPLE E8 091058 G0** for heights: 100 mm

Partition example for steel drawer F 22 S8 091058 with 32 compartments:  
 4 "yellow" inset boxes  
 16 "blue" inset boxes  
 12 "green" inset boxes



**EXAMPLE E8 091058 H0** for heights: 100 mm

Partition example for steel drawer F 22 S8 091058 with 28 compartments:  
 6 "yellow" inset boxes  
 12 "blue" inset boxes  
 6 "green" inset boxes  
 4 "forest" inset boxes



**EXAMPLE E8 091058 L0** for heights: 100 mm

Partition example for steel drawer F 22 S8 091058 with 42 compartments:  
 21 "yellow" inset boxes  
 12 "blue" inset boxes  
 9 "green" inset boxes



**EXAMPLE E8 091058 M0** for heights: 100 mm

Partition example for steel drawer F 22 S8 091058 with 49 compartments:  
 10 "red" inset boxes  
 17 "yellow" inset boxes  
 16 "blue" inset boxes  
 6 "green" inset boxes



**EXAMPLE E8 091058 N0** for heights: 100 mm

Partition example for steel drawer F 22 S8 091058 with 27 compartments:  
 6 "red" inset boxes  
 9 "yellow" inset boxes  
 6 "blue" inset boxes  
 4 "green" inset boxes  
 2 "dividers" S8  
 1 rubber "mat" S8



**EXAMPLE E8 091058 P0** for heights: 100 mm

Partition example for steel drawer F 22 S8 091058 with 26 compartments:  
 11 "yellow" inset boxes  
 8 "blue" inset boxes  
 6 "green" inset boxes  
 1 "divider" S8  
 1 rubber "mat" S8



# DIVIDERS

## E8 093 042

Dividers for drawers series S8 suitable for modules with width 423 mm and depth 930 mm  
 Drawer load capacity: 80 Kg  
 Available heights: 100 - 200 mm



**EXAMPLE E8 093042 A0** for heights: 100 - 200 mm

Partition example for steel drawer F 22 S8 093042:  
 1 rubber "mat" S4/S5



**EXAMPLE E8 093042 B1** for heights: 100 mm

**EXAMPLE E8 093042 B4** for heights: 200 mm

Partition example for steel drawer F 22 S8 093042 with 3 compartments:  
 2 "dividers" S8  
 1 rubber "mat" S4/S5



**EXAMPLE E8 093042 C1** for heights: 100 mm

**EXAMPLE E8 093042 C4** for heights: 200 mm

Partition example for steel drawer F 22 S8 093042 with 4 compartments:  
 3 "dividers" S8  
 1 rubber "mat" S4/S5



**EXAMPLE E8 093042 D0** for heights: 100 mm

Partition example for steel drawer F 22 S8 093042 with 27 compartments:  
 3 "yellow" inset boxes  
 24 "blue" inset boxes



**EXAMPLE E8 093042 E0** for heights: 100 mm

Partition example for steel drawer F 22 S8 093042 with 39 compartments:  
 27 "yellow" inset boxes  
 12 "blue" inset boxes



**EXAMPLE E8 093042 F0** for heights: 100 mm

Partition example for steel drawer F 22 S8 093042 with 17 compartments:  
 17 "green" inset boxes



**EXAMPLE E8 093042 G0** for heights: 100 mm

Partition example for steel drawer F 22 S8 093042 with 21 compartments:  
 12 "blue" inset boxes  
 9 "green" inset boxes



**EXAMPLE E8 093042 H0** for heights: 100 mm

Partition example for steel drawer F 22 S8 093042 with 17 compartments:  
 9 "blue" inset boxes  
 5 "green" inset boxes  
 3 "forest" inset boxes



**EXAMPLE E8 093042 L0** for heights: 100 mm

Partition example for steel drawer F 22 S8 093042 with 29 compartments:  
 12 "yellow" inset boxes  
 12 "blue" inset boxes  
 5 "green" inset boxes



**EXAMPLE E8 093042 M0** for heights: 100 mm

Partition example for steel drawer F 22 S8 093042 with 36 compartments:  
 8 "red" inset boxes  
 14 "yellow" inset boxes  
 9 "blue" inset boxes  
 5 "green" inset boxes



**EXAMPLE E8 093042 N0** for heights: 100 mm

Partition example for steel drawer F 22 S8 093042 with 20 compartments:  
 6 "red" inset boxes  
 6 "yellow" inset boxes  
 3 "blue" inset boxes  
 3 "green" inset boxes  
 2 "dividers" S8  
 1 rubber "mat" S4/S5



**EXAMPLE E8 093042 P0** for heights: 100 mm

Partition example for steel drawer F 22 S8 093042 with 17 compartments:  
 6 "yellow" inset boxes  
 6 "blue" inset boxes  
 4 "green" inset boxes  
 1 "divider" S8  
 1 rubber "mat" S4/S5



# DIVIDERS

## E8 093 058

Dividers for drawers series S8 suitable for modules with width 580 mm and depth 930 mm  
 Drawer load capacity: 80 Kg  
 Available heights: 100 - 200 mm



**EXAMPLE E8 093058 A0** for heights: 100 - 200 mm

Partition example for steel drawer F 22 S8 093058:  
 1 rubber "mat" S8



**EXAMPLE E8 093058 B1** for heights: 100 mm

**EXAMPLE E8 093058 B4** for heights: 200 mm

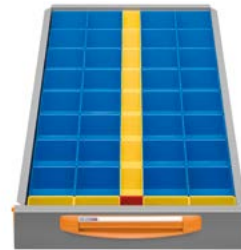
Partition example for steel drawer F 22 S8 093058 with 3 compartments:  
 2 "dividers" S8  
 1 rubber "mat" S8



**EXAMPLE E8 093058 C1** for heights: 100 mm

**EXAMPLE E8 093058 C4** for heights: 200 mm

Partition example for steel drawer F 22 S8 093058 with 4 compartments:  
 3 "dividers" S8  
 1 rubber "mat" S8



**EXAMPLE E8 093058 D0** for heights: 100 mm

Partition example for steel drawer F 22 S8 093058 with 45 compartments:  
 1 "red" inset box  
 12 "yellow" inset boxes  
 32 "blue" inset boxes



**EXAMPLE E8 093058 E0** for heights: 100 mm

Partition example for steel drawer F 22 S8 093058 with 57 compartments:  
 1 "red" inset box  
 36 "yellow" inset boxes  
 20 "blue" inset boxes



**EXAMPLE E8 093058 F0** for heights: 100 mm

Partition example for steel drawer F 22 S8 093058 with 29 compartments:  
 1 "red" inset box  
 4 "yellow" inset boxes  
 24 "green" inset boxes



**EXAMPLE E8 093058 G0** for heights: 100 mm

Partition example for steel drawer F 22 S8 093058 with 35 compartments:  
 1 "red" inset box                      13 "green" inset boxes  
 5 "yellow" inset boxes  
 16 "blue" inset boxes



**EXAMPLE E8 093058 H0** for heights: 100 mm

Partition example for steel drawer F 22 S8 093058 with 31 compartments:  
 1 "red" inset box                      7 "green" inset boxes  
 7 "yellow" inset boxes                4 "forest" inset boxes  
 12 "blue" inset boxes



**EXAMPLE E8 093058 L0** for heights: 100 mm

Partition example for steel drawer F 22 S8 093058 with 45 compartments:  
 1 "red" inset box                      10 "green" inset boxes  
 22 "yellow" inset boxes  
 12 "blue" inset boxes



**EXAMPLE E8 093058 M0** for heights: 100 mm

Partition example for steel drawer F 22 S8 093058 with 50 compartments:  
 7 "red" inset boxes                    7 "green" inset boxes  
 20 "yellow" inset boxes  
 16 "blue" inset boxes



**EXAMPLE E8 093058 N0** for heights: 100 mm

Partition example for steel drawer F 22 S8 093058 with 27 compartments:  
 6 "red" inset boxes                    4 "green" inset boxes  
 9 "yellow" inset boxes                2 "dividers" S8  
 6 "blue" inset boxes                   1 rubber "mat" S8



**EXAMPLE E8 093058 P0** for heights: 100 mm

Partition example for steel drawer F 22 S8 093058 with 26 compartments:  
 11 "yellow" inset boxes                1 "divider" S8  
 8 "blue" inset boxes                    1 rubber "mat" S8  
 6 "green" inset boxes



# DIVIDERS E8 108 042

Dividers for drawers series S8 suitable for modules with width 423 mm and depth 1086 mm  
 Drawer load capacity: 80 Kg  
 Available heights: 200 mm



**EXAMPLE E8 108042 A0** for heights: 200 mm

Partition example for steel drawer F 22 S8 108042:  
 1 rubber "mat" S4/S5



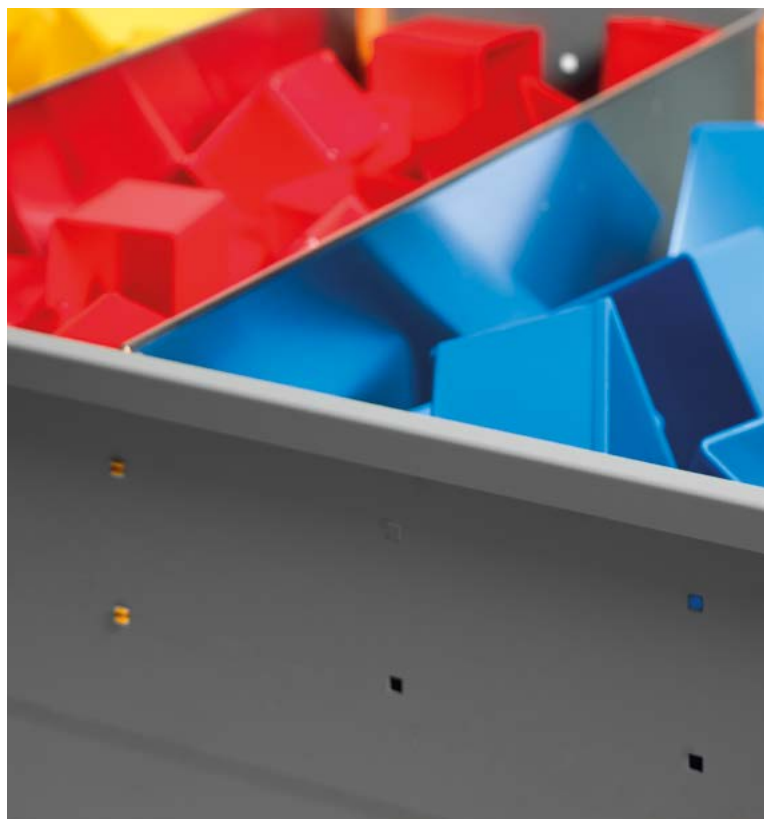
**EXAMPLE E8 108042 B4** for heights: 200 mm

Partition example for steel drawer F 22 S8 108042 with 3 compartments:  
 2 "dividers" S8  
 1 rubber "mat" S4/S5



**EXAMPLE E8 108042 C4** for heights: 200 mm

Partition example for steel drawer F 22 S8 108042 with 4 compartments:  
 3 "dividers" S8  
 1 rubber "mat" S4/S5







# DIVIDERS E8 108 058

Dividers for drawers series S8 suitable for modules with width 580 mm and depth 1086 mm  
 Drawer load capacity: 80 Kg  
 Available heights: 200 mm



**EXAMPLE E8 108058 A0** for heights: 200 mm

Partition example for steel drawer F 22 S8 108058:  
 1 rubber "mat" S8



**EXAMPLE E8 108058 B4** for heights: 200 mm

Partition example for steel drawer F 22 S8 108058 with 3 compartments:  
 2 "dividers" S8  
 1 rubber "mat" S8



**EXAMPLE E8 108058 C4** for heights: 200 mm

Partition example for steel drawer F 22 S8 108058 with 4 compartments:  
 3 "dividers" S8  
 1 rubber "mat" S8





[WWW.STOREVAN.COM](http://WWW.STOREVAN.COM)



**FAMI S.r.l.**

Via Stazione Rossano, 13 | 36027 Rosà (VI) | ITALY  
phone +39 0424 585455 | fax +39 0424 585482  
[www.famispaspa.com](http://www.famispaspa.com) | [info@famispaspa.com](mailto:info@famispaspa.com)  
[www.storevan.com](http://www.storevan.com) | [info@storevan.com](mailto:info@storevan.com)